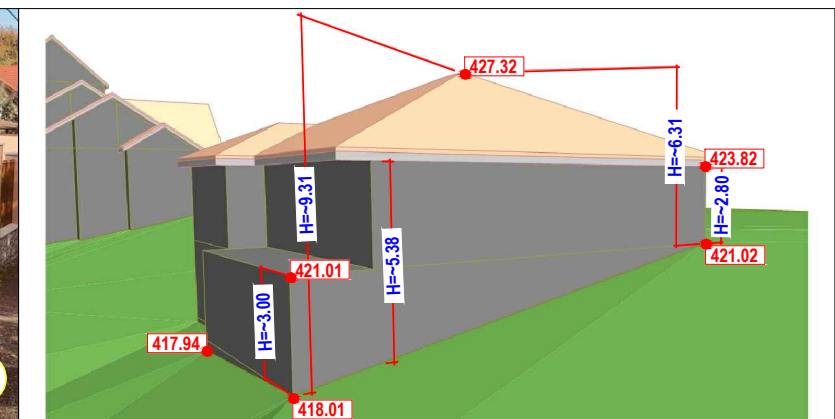
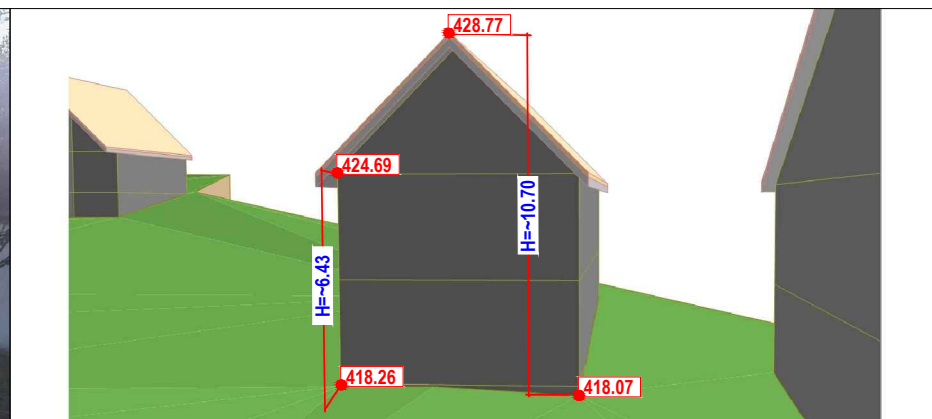
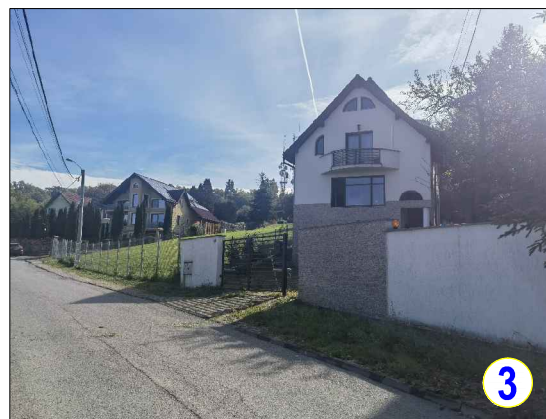
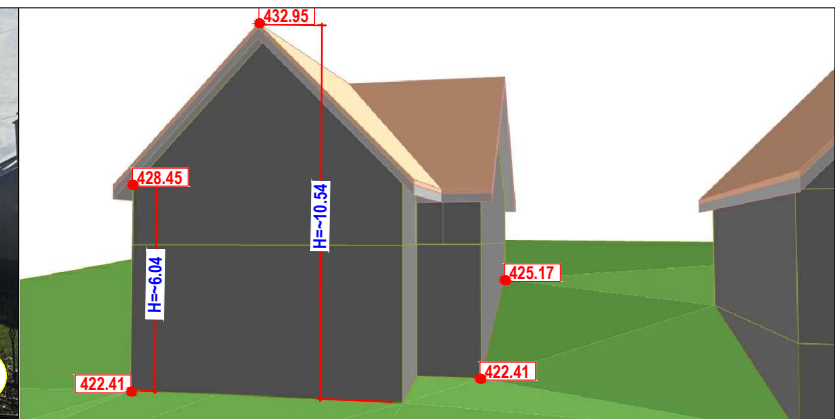
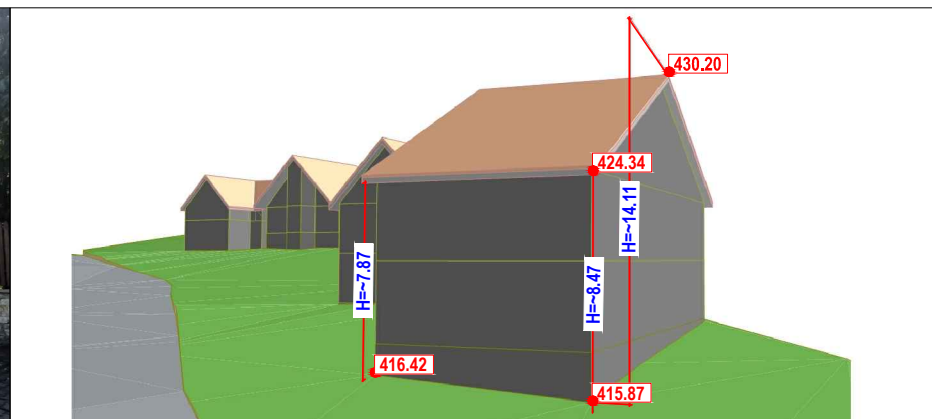
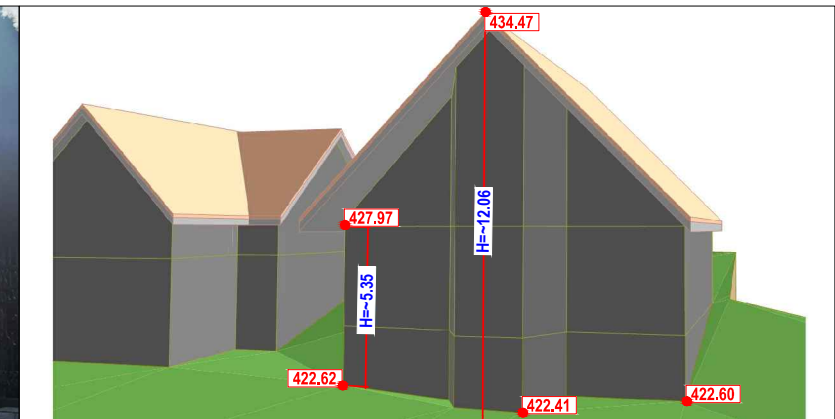
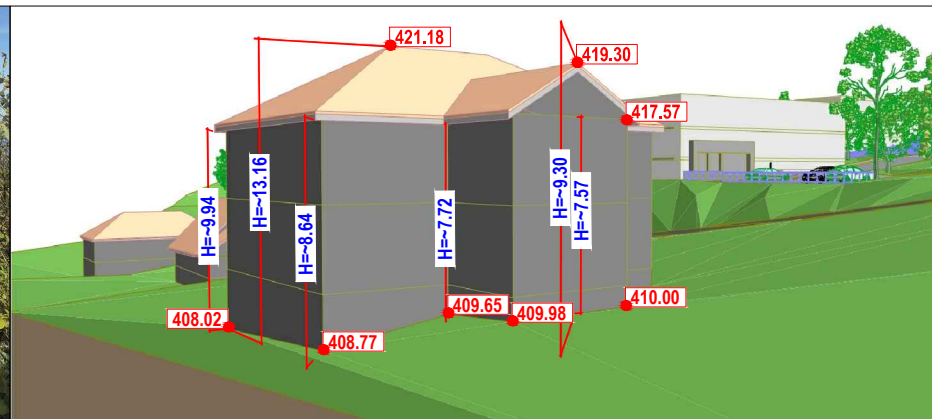
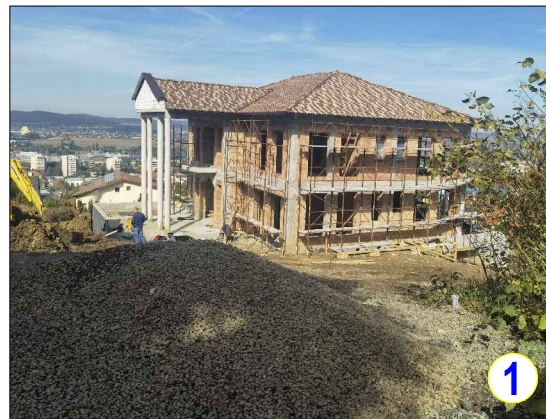



STUDIU VOLUMETRIC - INALTIME ESTIMATA CLADIRI EXSTENTE 1/2



NOTA:
Cotele au o toleranta care nu afecteaza concluziile din acest studiu. (5-10cm)

 BIROU DE ARHITECTURA SI URBANISM CALUSERI - J26-728-1994	sef proiect	arh. Octavian LIPOVAN	
	proiectat	arh. Octavian LIPOVAN	
	desenat	urb. JAKAB Szabolcs S.	
	verificat	arh. Octavian LIPOVAN	
	BENEFICIARI: U.M.F.S.T. "GEORGE EMIL PALADE" Tg.Mures, str.Gh. Marinescu, nr.38, jud. Mures		FAZA: PUZ
	TITLU PROIECT: PUZ-INTRODUCERE TEREN IN INTRAVILANUL LOCALITATII SI STABILIRE REGLEMENTARI URBANISTICE PENTRU CONSTRUIRE CENTRU SPORTIV DE RECREERE SI REABILITARE STUDENTEASCA	DATA: 2022	NR.PROIECT: 650-22
	TITLU PLANSA: STUDIUL VOLUMETRIC	SCARA: %	REV. - NR.PLANSA : U 007.2
ACEST PROIECT ESTE PROPRIETATEA INTELCTUALA A SC ARHIGRAF SRL. UTILIZAREA LUI INTRA SUB INCIDENTA LEGII DREPTULUI DE AUTOR.			